

# JET dome rooflight glass

**VELUX®**
**Commercial**


The perfect combination of dome rooflight and insulation glazing technology  
Robust daylight technology for greater efficiency and safety

## JET dome rooflight glass

- fixed or ventable flat roof daylight system
- profile integrated chain thrust motors for
  - daily ventilation with 300 mm lifting height (230V AC)
  - "Staircase SHEV" in accordance with state building code, with 500 mm lifting height (24V DC)
- alternative outfitting, with mechanical roof exit device

### Technical data

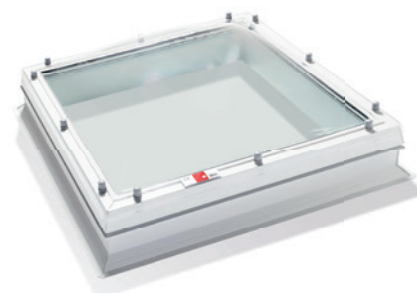
- glazing variants:
  - heat protection glazing JET WSG 79/62 ( $U_g = 1.1 \text{ W/m}^2\text{K}$ )
  - + PMMA single-glazed  $\rightarrow U_g = \text{approximate } 0.91 \text{ W/m}^2\text{K}$
  - + PMMA double-glazed  $\rightarrow U_g = \text{approximate } 0.77 \text{ W/m}^2\text{K}$
- light transmission:
  - $T_L$  dependent on the chosen glazing combination and version in opal or clear
  - of approximate 73% (1 x ISO + 1 x PMMA clear)
  - of approximate 65% (1 x ISO + 1 x PMMA clear + 1 x PMMA opal outside)
- total energy transmission:
  - g-value dependent on the chosen glazing combination and version in opal or clear
  - of approximate 61% (1 x ISO + 1 x PMMA clear)
  - of approximate 58% (1 x ISO + 1 x PMMA clear + 1 x PMMA opal outside)
- sound insulation:  $\geq 35 \text{ dB}$

## Product advantages

- Top quality product concerning heat and sound insulation
- completely thermally separated construction
- sound-absorbing heat protection glazing
- upstands with high thermal insulation in vertical or slanted design
- dimensioning for applications in accordance with EnEV 2014 (2016)
- fall-through protection: SB 350 according to NEN-EN 1991-1-1/NB
- natural room illumination with optimal light efficiency
- light, fresh air and a view in combination with comfort applications
- optional ventilation and inner shadowing system, with optional radio remote control
- connection to JET SMARTCONTROL for more comfort
- mechanical roof exit device upon request (upon request)

## JET dome rooflight glass ROUND

- alternative versions also possible in round (fixed only)



Ventable JET dome rooflight glass, mounted on PVC AK upstand 16

## Delivery programme for JET dome rooflight glass

### Vertical upstands

Nominal size = ULW [cm]	PVC AK upstand 16 cm height	GRP AK upstand 30 + 50 cm height	ISO-THERM AK upstand 30, 40, 50 or 60 cm height
40 x 40	•	-	•
40 x 70	•	-	•
60 x 60	•	•	•
60 x 90	•	-	•
70 x 70	•	•	•
70 x 100	•	-	•
80 x 80	•	•	•
80 x 130	•	-	•
90 x 90	•	-	•
100 x 100	•	•	•
100 x 160	•	•	•
120 x 120	•	•	•
130 x 130	•	-	•
140 x 140	•	-	•

### Sloped upstands

Nominal size = ULW [cm]	GRP AK upstand 30, 40 or 50 cm height	ISO-THERM AK upstand 30, 40, 50 or 60 cm height
60 x 60	•	•
60 x 90	•	•
80 x 80	•	•
-	-	-
90 x 90	•	•
90 x 120	•	•
100 x 100	•	•
100 x 150	•	•
-	-	-
120 x 120	•	•
120 x 180	•	•
140 x 140	•	•
150 x 150	•	•
-	-	-

### Outfitting

Light influx area = OLW [cm]	Chain thrust motor profile-integrated	Interior shadowing, including radio remote control
40 x 40	•	•
40 x 70	•	•
60 x 60	•	•
60 x 90	•	•
70 x 70	•	•
70 x 100	•	•
80 x 80	•	•
80 x 130	•	•
90 x 90	•	•
100 x 100	•	•
100 x 160	•	•
120 x 120	•	•
130 x 130	•	•
140 x 140	•	•

• = deliverable - = not deliverable

**Note:**

All steep upstands are available with concealed cabling

**Note:**

Only ISO-THERM AK upstand slanted can be provided with concealed cabling

## JET dome rooflight glass



JET dome rooflight glass mounted on steep GRP AK upstand 30 cm, with concealed 230V drive and shadowing system, including a handheld radio remote control



JET dome rooflight glass mounted on slanted ISO-THERM AK upstand 30 cm, with concealed 230V drive

## JET dome rooflight glass roof exit (with mechanical roof exit device)

---

### Vertical upstands

---

Nominal size = ULW [cm]	PVC AK upstand 16cm height	PVC ADD-ON 16cm height	Light influx area = OLW [cm]
80 x 80	•	•	80 x 80
90 x 90	•	•	90 x 90
100 x 100	•	•	100 x 100
100 x 160	•	•	100 x 160
120 x 120	•	•	120 x 120

• = deliverable - = not deliverable

## JET dome rooflight glass roof exit

---



JET dome rooflight glass mounted on steep PVC AK upstand 16, with mechanical roof exit system, including tandem gas pressure springs (1 x lockable), handles (inside and outside) and latch; maximum opening angle: 60°

## JET dome rooflight glass 24V (for geometric smoke exhaust)

### Steep upstands

Nominal size = ULW [cm]	ISO-THERM AK upstand 30, 40, 50 or 60 cm height
100 x 100	•

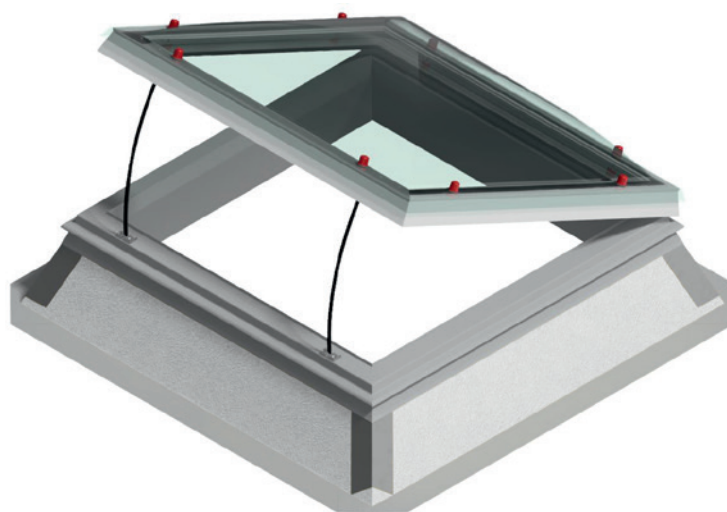
### Slanted upstands

Nominal size = ULW [cm]	ISO-THERM AK upstand 30, 40, 50 or 60 cm height
120 x 120	•

### Outfitting

Chain thrust motor profile-integrated	Light influx area = OLW [cm]
•	100 x 100

- = deliverable
- = not deliverable



JET dome rooflight glass mounted on slanted ISO-THERM AK upstand 30 cm, with concealed 24V drive