



Flat roof window for energy-efficient glass architecture on buildings with atmosphere  
A significant daylight system with many appearances

### SKYSIGHT

- available as fixed or ventilated flat roof daylight system
- vents open using high-quality chain thrust motors with 300 or 500 mm lifting height
- opens up to an angle up to 90° for roof exit
- aluminium surfaces coated in white RAL 9016 or your choice of RAL colour

#### Glazing variants

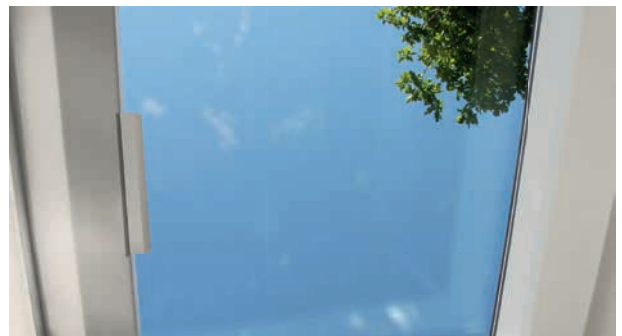
- insulated glazing with sun and heat protection as standard with warm edge
- available as step glazing

#### Double-insulation glazing

Glass quality: outside ESG, inside LSG

- heat protection glazing WSG 78/57  
( $U_g$ -value = 1.1 W/m<sup>2</sup>K according to DIN 673)  
light transmission:  $T_L$  approximately 78%  
energy transmission: g-value approximately 57%
- sun protection glazing SSG 66/36  
( $U_g$ -value = 1.1 W/m<sup>2</sup>K according to DIN 673)  
light transmission:  $T_L$  approximately 66%  
energy transmission: g-value approximately 36%

Sound insulation  $R_w$  = approximately 36 dB



SKYSIGHT with chain thrust motor

#### Triple-insulation glazing

Glass quality: outside ESG, inside LSG

- heat protection glazing WSG 68/48  
( $U_g$ -value = 0.6 W/m<sup>2</sup>K according to DIN 673)  
light transmission:  $T_L$  approximately 68%  
energy transmission: g-value approximately 48%
- sun protection glazing SSG 58/33  
( $U_g$ -value = 0.6 W/m<sup>2</sup>K according to DIN 673)  
light transmission:  $T_L$  approximately 58%  
energy transmission: g-value approximately 33%

Sound insulation  $R_w$  = approximately 39 dB

#### Note:

Indicated values are related to the glazing. The indicated function values for the glass products and the photometric data correspond to the relevant and actual testing standards with the requested and described testing measurements. Variations in size and other options may affect performance.

## Product benefits

### Excellent thermal and sound insulation, thanks to

- thermally separated aluminium profiles
- sound-absorbing heat protection glazing
- well insulated, thermal separation metal upstand (ISO-THERM AK upstand) with  $U_{up}$  to 0.63 W/m<sup>2</sup>K according to EN 1873 (valid for upstand height = 60 cm)
- highest air tightness (class 4 acc. DIN EN 12207)
- dimensioning for application according to EnEV 2014 (2016)
- natural room illumination with optimal light efficiency
- high quality design (can be equipped with chain thrust motor)
- provides light, fresh air and the ability to see outside, helping to improve comfort for building occupants
- optional ventilation and external shading system with radio remote control
- connection to SMARTCONTROL for more precise environmental control
- optional stepped glass for optimal water run off (standard with roof exit fittings)
- optional design of the ISO-THERM AK metal upstand with integrated 7° inclination to support the natural glass cleaning effect
- fast fitting by the roofing contractor is possible, because the SKYSIGHT will be delivered prefabricated on upstands and packed on a transportable pallet

### Fall-through protection

- permanent fall-through protection with ESG externally to DIN 18008-6:2018-02

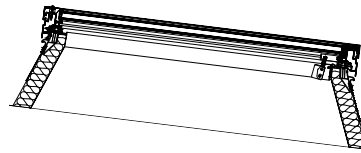
## Product range SKYSIGHT

Order dimensions [LCOW]	Weight SKYSIGHT double-insulation glazing	Weight SKYSIGHT triple-insulation glazing	Light permeation dimension [UCOW]	24V roof exit on ISO steep upstand [UCOW = LCOW]	Opening angle Hinge open	
					Longer side	Shorter side
cm x cm	in kg (approx.)	in kg (approx.)	cm x cm		approx. in°	approx. in°
60 x 60	9	13	40 x 40	-	-	-
60 x 90	15	20	40 x 70	-	-	-
80 x 80	18	24	60 x 60	-	-	-
90 x 90	24	32	70 x 70	-	-	-
90 x 120	34	45	70 x 100	-	-	-
100 x 100	31	41	80 x 80	-	-	-
100 x 150	49	64	80 x 130	-	-	-
120 x 120	47	61	100 x 100	•	90°	90°
120 x 150	60	78	100 x 130	•	90°	90°
120 x 180	74	96	100 x 160	•	90°	60°
150 x 150	78	100	130 x 130	•	90°	90°
150 x 180	95	122	130 x 160	•	90°	60°
150 x 210	112	143	130 x 190	• <sup>1)</sup>	90°	60°

1) not for triple insulating glass

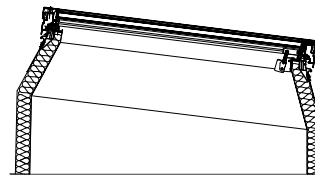
**Note:** Alternatively the SKYSIGHT can be combined with GFRP AK upstands with heights of 30 and 50 cm as well as various thermal insulation thicknesses. In order to create an increased height, an optional 7°-GFRP adapter is available. The combination of different materials from upstands, adapters and ventilation frames can result in slight colour differences.

## Installation with sufficient roof angle



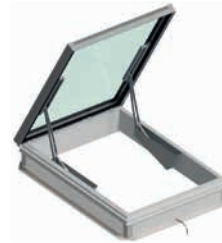
SKYSIGHT (ventable) with stepped glass, e.g. on ISO-THERM AK upstand

## Installation with lower roof incline



SKYSIGHT (ventable) with stepped glass e.g. on ISO-THERM AK upstand including 7° incline

## Installation as roof exit



SKYSIGHT with 24V roof exit fitting on ISO-THERM AK upstand 30 steep