

# Dome rooflight accessories weather protection

**VELUX®**
**Commercial**


## Wind and rain automatic for ventable daylight elements

### SMARTCONTROL LIGHT

#### Wind and rain automatic for office, municipal and residential buildings

- external 230V weather station (sensor unit)
- collects information on wind speed, precipitation, outdoor temperatures and brightness, and has GPS reception for the date, time and calculation of the sun's position
- 230V drive line power supply
- central operating and control panel with five-inch LCD touchscreen display (up to four centres can be programmable at the weather station) battery-operated (micro USB) radio unit
- collects room temperature information
- 15 radio channels for communication with motor control units for 230V ventilation or shadowing drives or e.g. sources of light, etc.
- 32 radio channels for the integration of sensors (to collect information on humidity, CO<sub>2</sub> content, temperature or radio buttons or hand-held radio remote controls)
- communication between control unit and weather station

#### Possible applications

- ideal for the smart control of comfort drives for ventilation or shadowing in smaller office, municipal and residential buildings

#### Product advantages

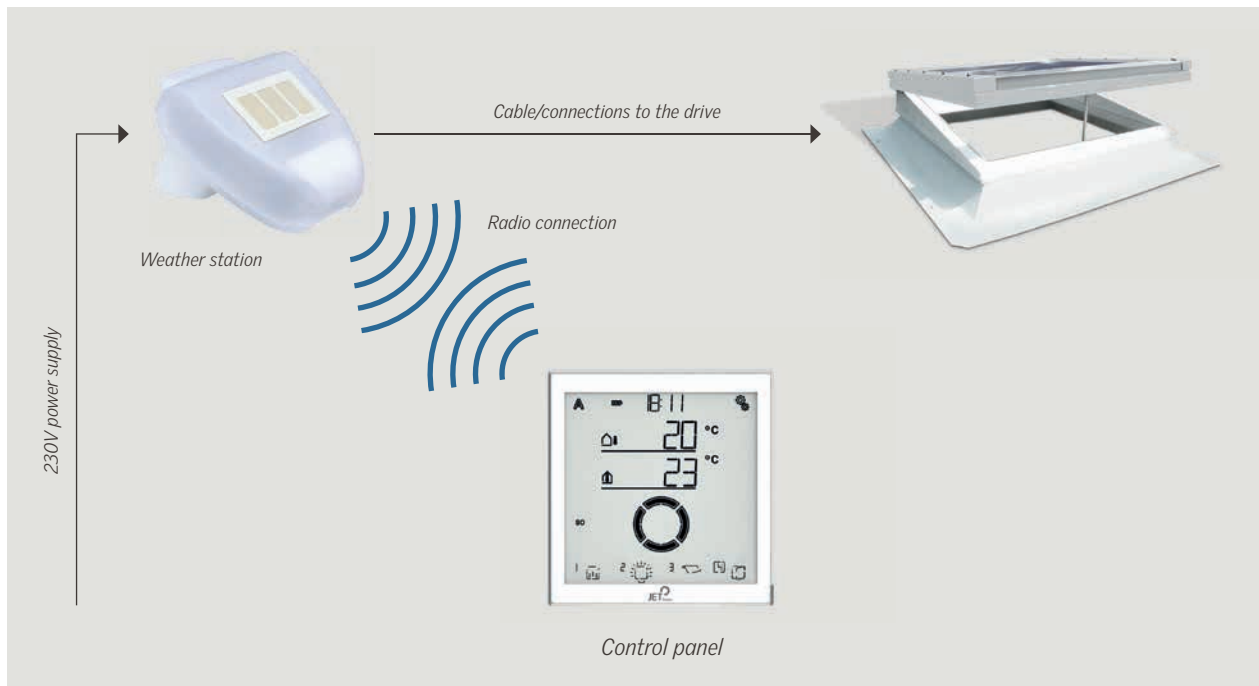
- more comfort with intuitive operation
- relatively low installation effort
- suitable for retrofitting

#### Options

- Expansion with a WLAN interface that can be controlled by smartphone app (data communication only in your immediate surroundings – not with external web servers)



## Overview of functions



## Wind and rain automatic (W+RE B/4)

### Weather switching device for ventilation systems

- adjustable wind speed
- change between automatic or hand operation
- optical display of the operating status
- short-term ventilation during rain
- central closing function
- designed for four ventilation groups
- optionally expandable
- combinable with SHEV systems

### Wind-rain sensor

optional mounting accessories for

- wall mounting
- ceiling mounting
- the installation of continuous rooflights

